

SECTION 16, T.6N., R.2W., S.L.B. & M.

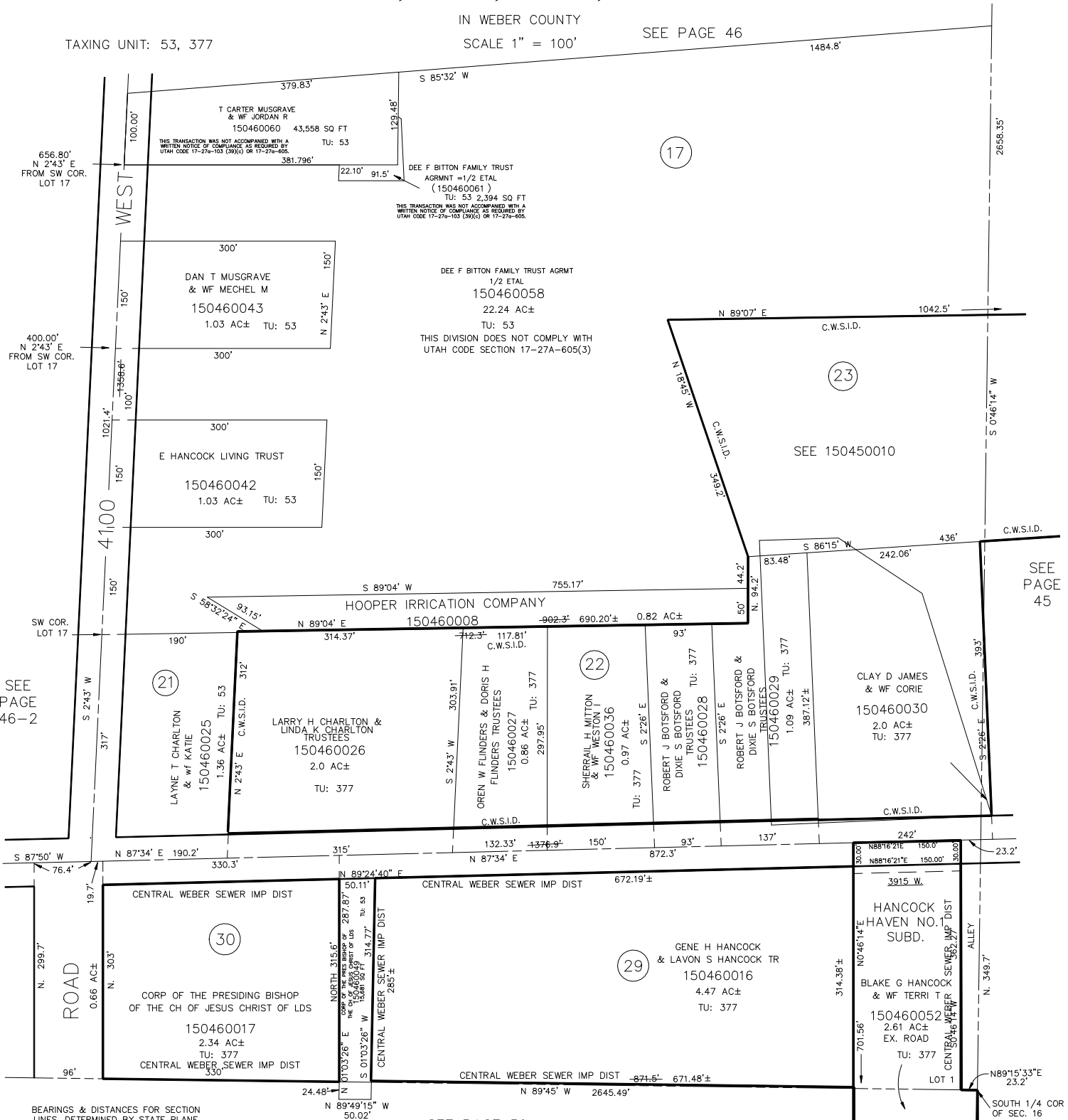
PART OF S.W. 1/4

IN WEBER COUNTY

SEE PAGE 46

TAXING UNIT: 53, 377

SCALE 1" = 100'



BEARINGS & DISTANCES FOR SECTION LINES, DETERMINED BY STATE PLANE COORDINATES RECEIVED FROM WEBER COUNTY SURVEYORS OFFICE.

SEE PAGE 59

L.D.F. 12-91